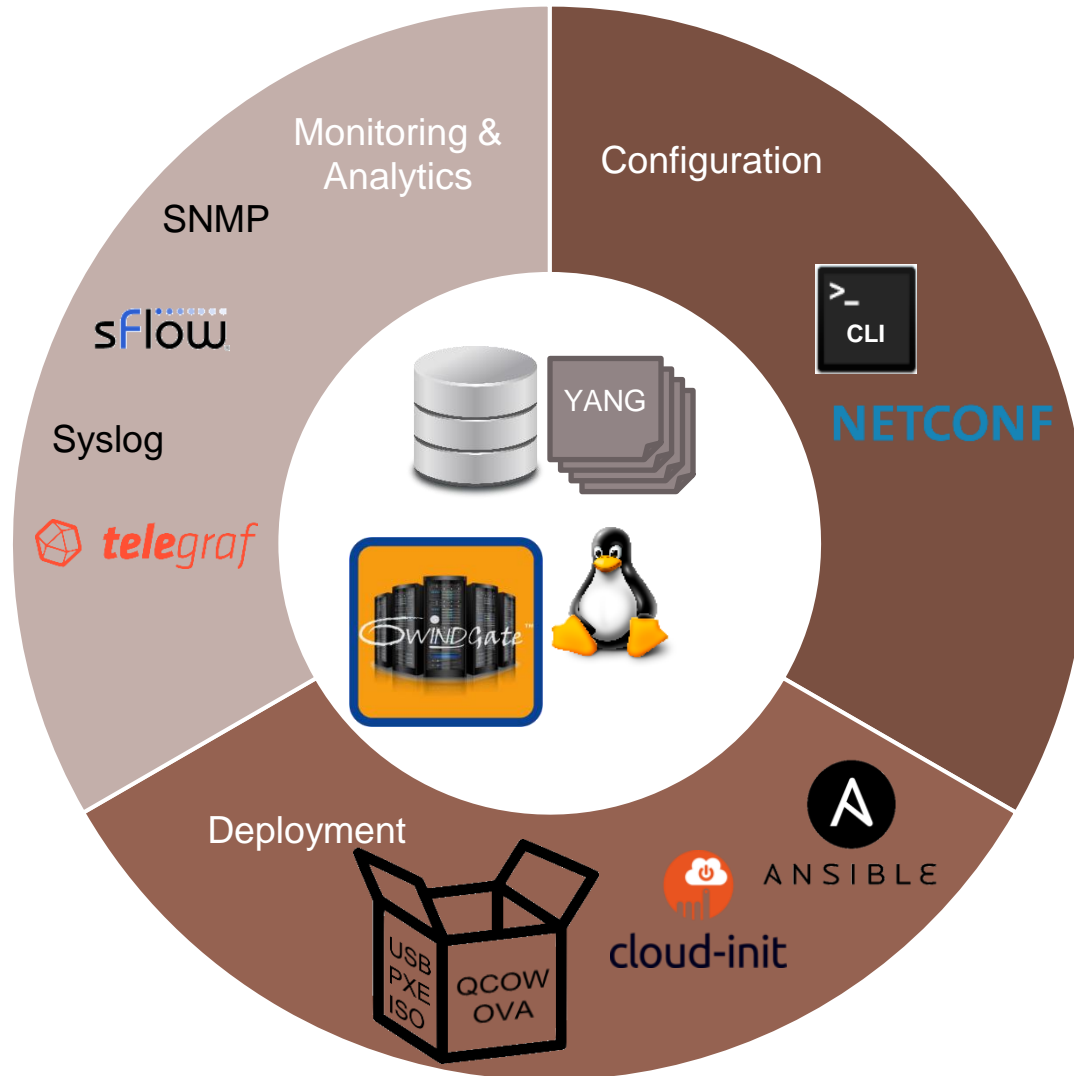


6WINDGate Management



#SPEEDMATTERS For Serious Networks

6WINDGate Open and Customizable Management



- **YANG-based management engine**
- **Configuration**
 - Linux, NETCONF and CLI
- **Granular statistics polling**
 - CLI, NETCONF and SNMP
- **sFlow**
- **KPIs**
 - Streamed to a time-series database for analysis through a customizable graphical fronted
- **Day-0 deployment and Day-1 configuration**

6WINDGate Standard-Based Management Architecture

■ Configuration

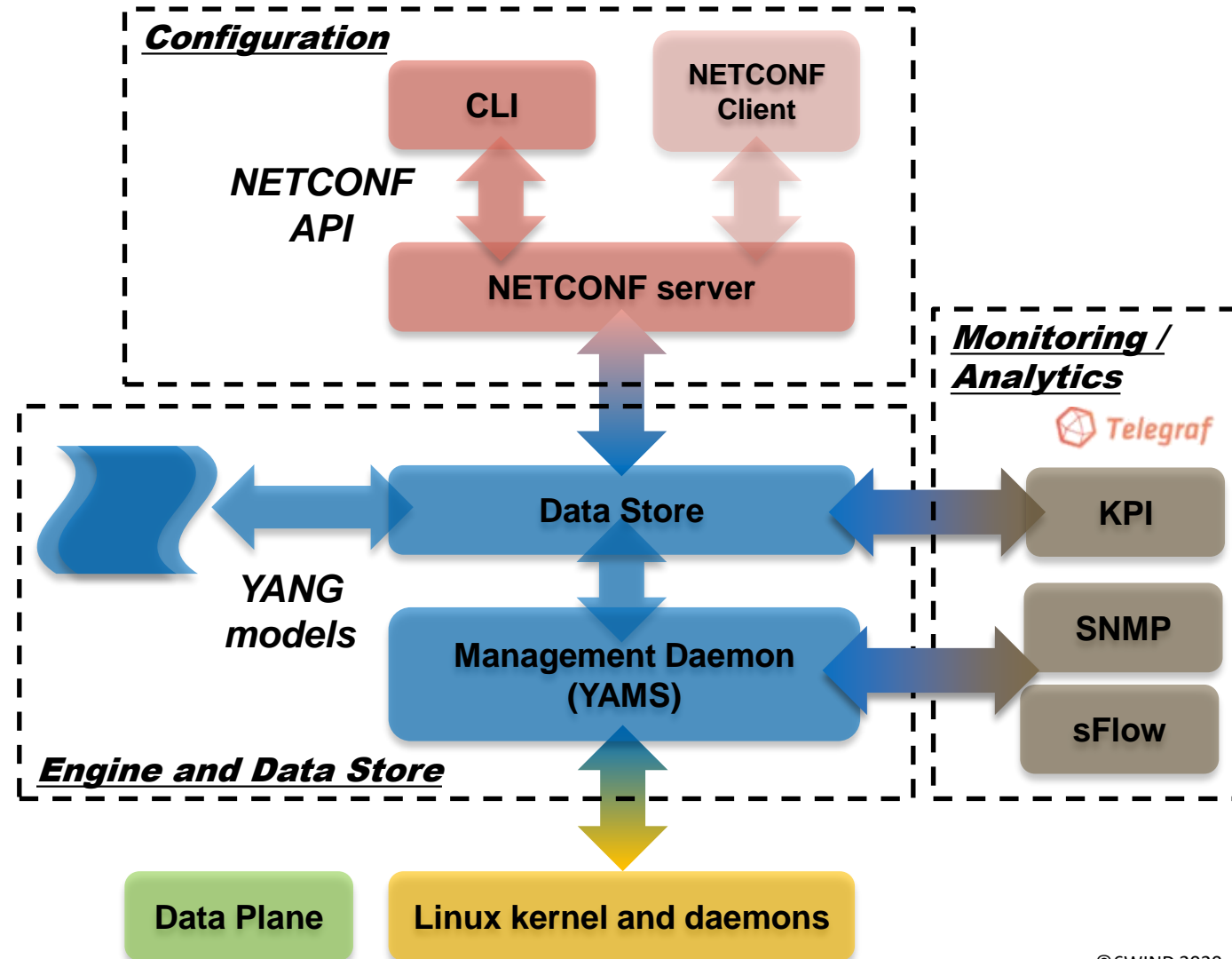
- NETCONF-based configuration
- 6WINDGate CLI client

■ Engine and data store

- YAMS: Python-based engine configuring and monitoring all network components
- YANG model data store

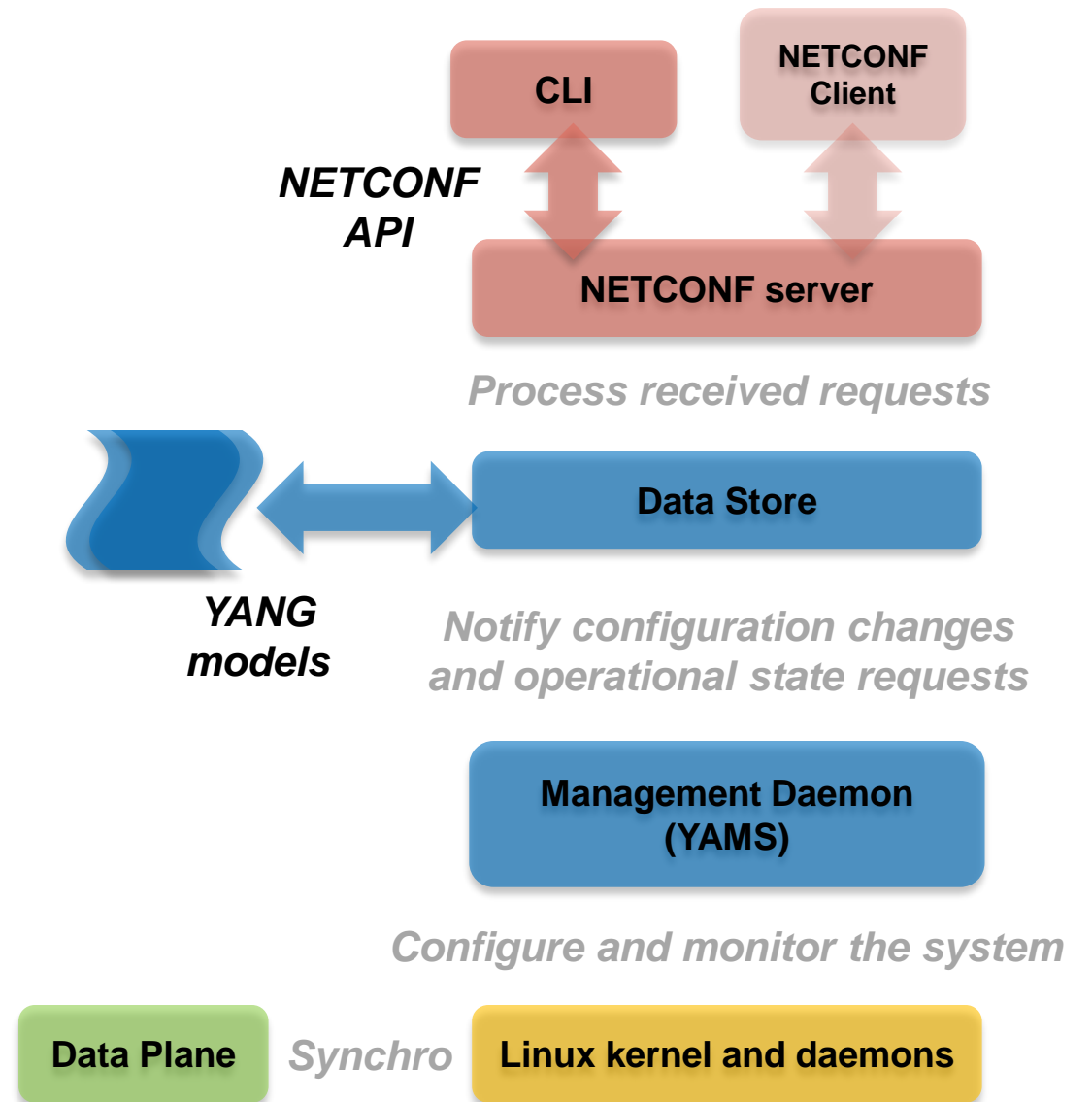
■ Monitoring / analytics

- SNMP / sFlow APIs
- Telegraf KPI agent collecting all statistics ready for streaming

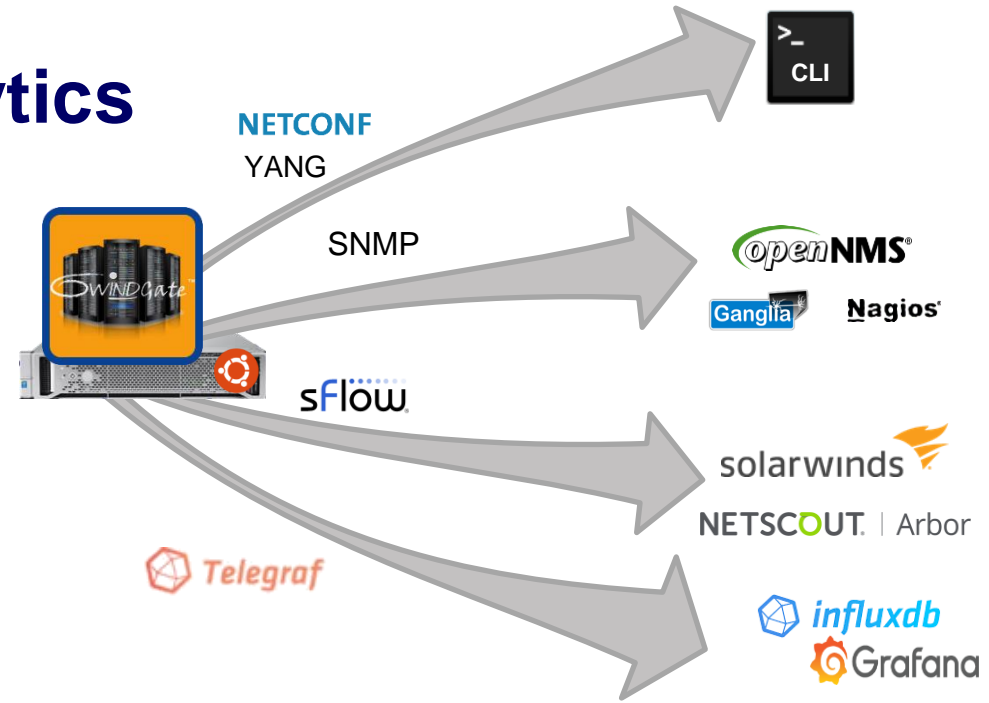


6WINDGate Configuration

- **YANG-based configuration engine and datastore with NETCONF support**
 - Startup, running and candidate datastore support
 - Data consistency and constraints enforcement according to YANG models
 - Full transaction and concurrency support
 - Programmatic interface
- **CLI**
 - NETCONF client with YANG-based command validation
 - Contextual help and completion
 - Configuration files management (save/restore)



6WINDGate Monitoring / Analytics



■ Granular statistics polling

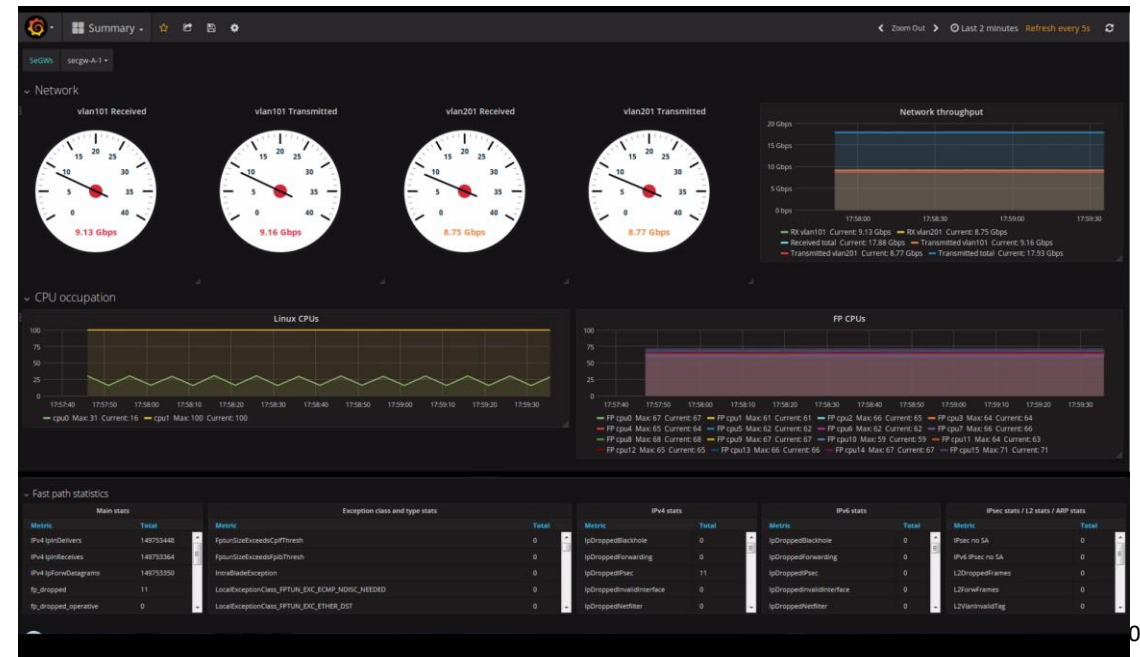
- CLI or custom NETCONF client
- Legacy SNMP

■ sFlow

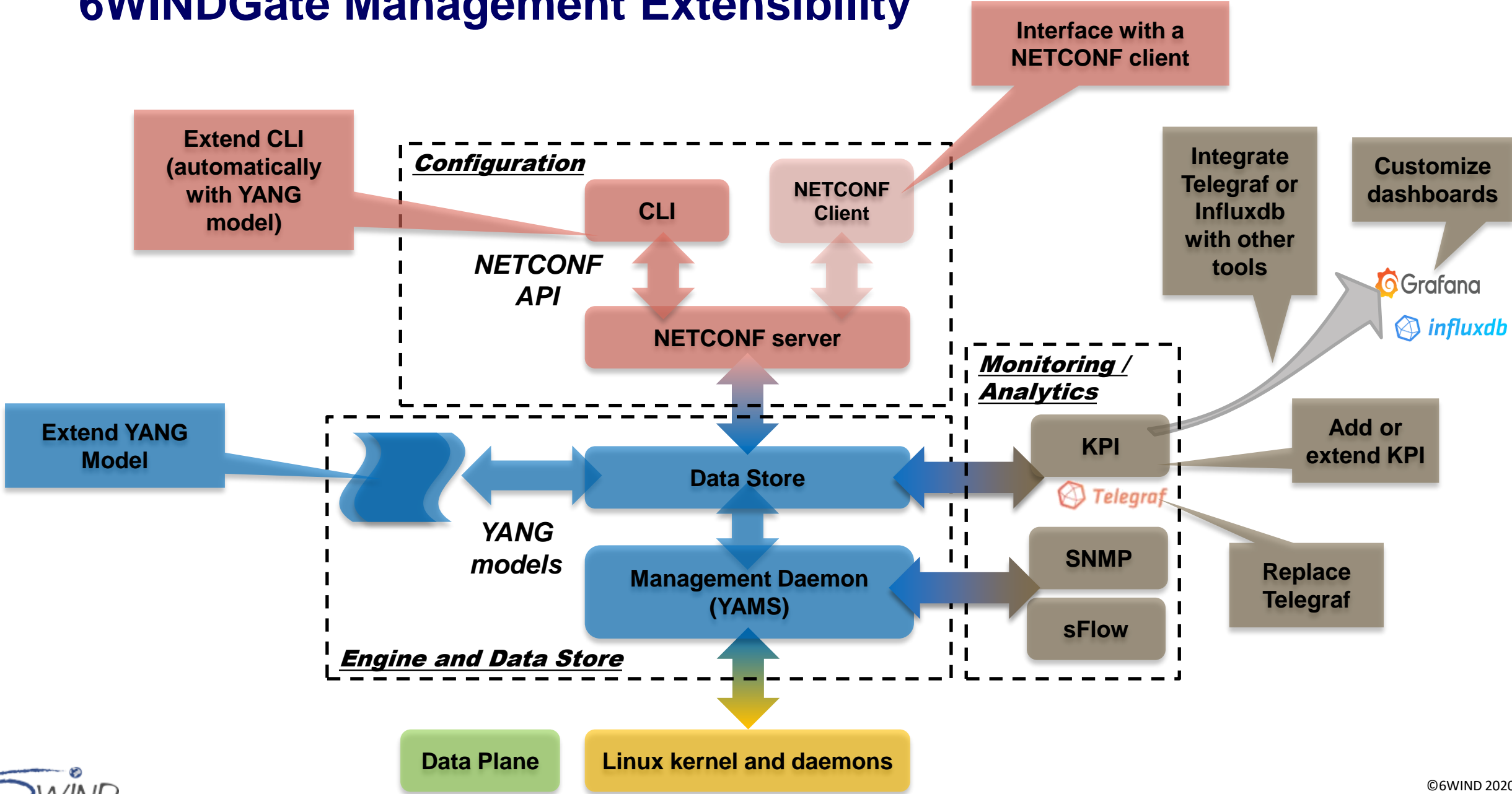
- Data plane packet sampling for integration with third-party collectors

■ KPIs

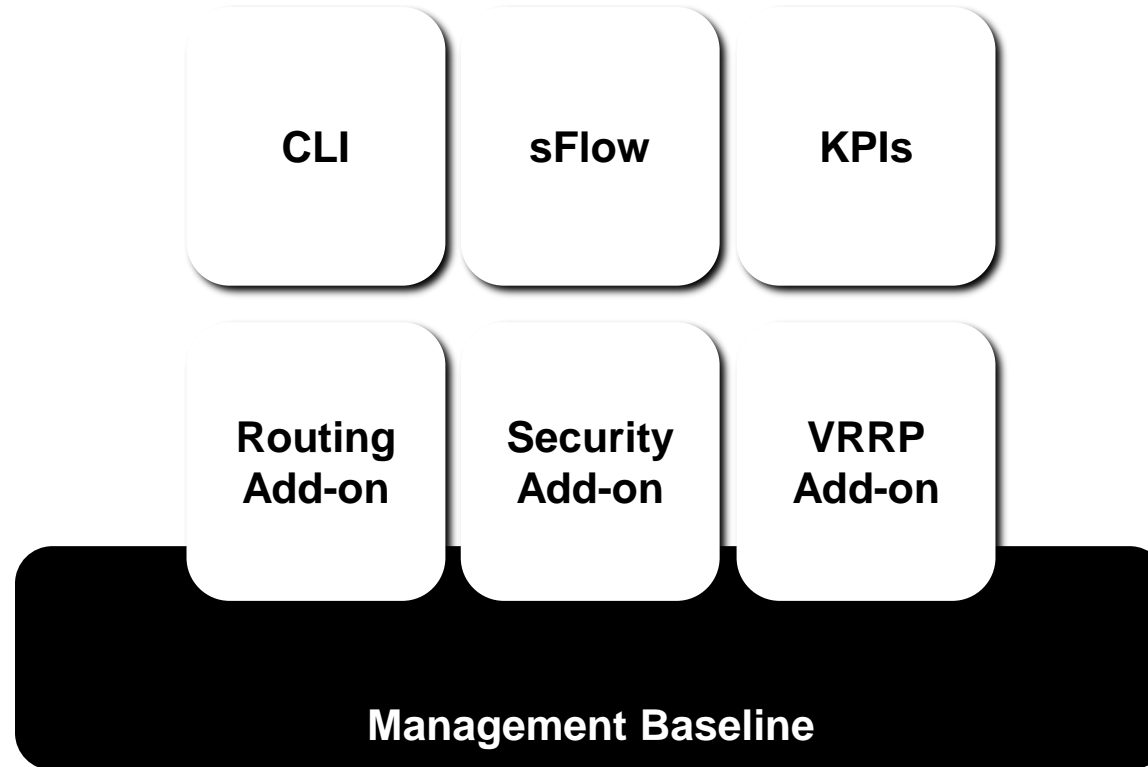
- KPIs are exported to TSDB (Telegraf / InfluxDB)
- Analysis with graphical frontend (Grafana)
- Customizable dashboards on [github](https://github.com)



6WINDGate Management Extensibility



6WINDGate Management Plane



6WINDGate Management Modules

- **6WINDGate can be managed by Linux thanks to the Linux / Fast Path Synchronization module**
- **6WINDGate Management modules provide integrated management including CLI and programmatic APIs instead of Linux shell and inconsistent configuration files**
- **Management Baseline provides Fast Path management**
 - NETCONF, SNMP
 - YANG-based datastore (sysrepo)
- **CP and HA management through add-ons**
 - Routing, Security
 - VRRP
- **Additional user interface modules**
 - CLI
 - Analytics / KPIs
 - Analytics / sFlow

Example Of Management Extension



#SPEEDMATTERS For Serious Networks

Example: Add Management For A Telnet Server

- See example in [6WINDGate Management Baseline Module Datasheet](#)