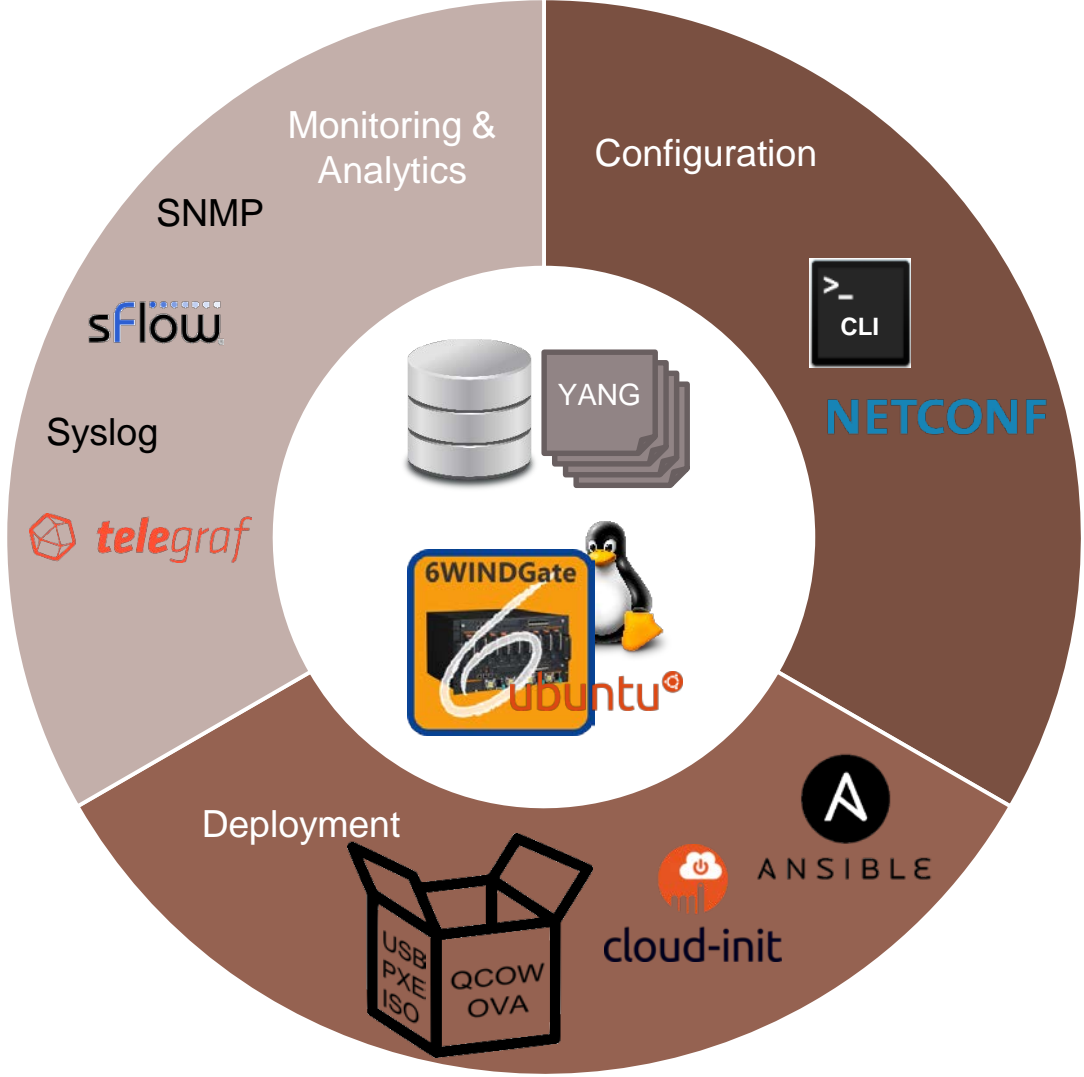


6WINDGate Management



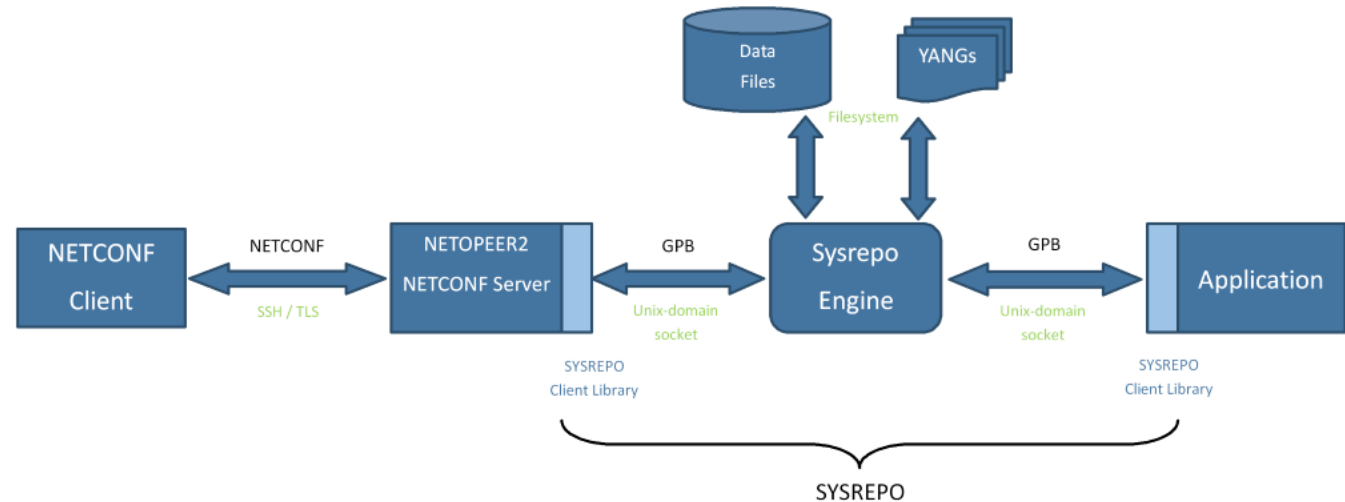
#SPEEDMATTERS For Serious Networks

6WINDGate Management



Open Standard-Based Architecture

- New management relies on standards (Linux, YANG, NETCONF) so that the integration with existing management tools and frameworks will be easy
- 6WINDGate YANG models are public
- Open source framework
 - NETCONF server: netopeer2
 - Datastore: [sysrepo](#)
 - Telemetry: [telegraf](#)



Configuration of 6WINDGate Features

- **CLI**
 - Contextual help and completion
 - Configuration files management (save/restore)
 - NETCONF client with YANG-based command validation
- **YANG-based configuration engine and datastore with NETCONF support**
 - Startup, running and candidate datastore support
 - Data consistency and constraints enforcement according to YANG models
 - Full transaction and concurrency support
 - Programmatic interface
- **Customers can integrate 6WINDGate with another NETCONF client**

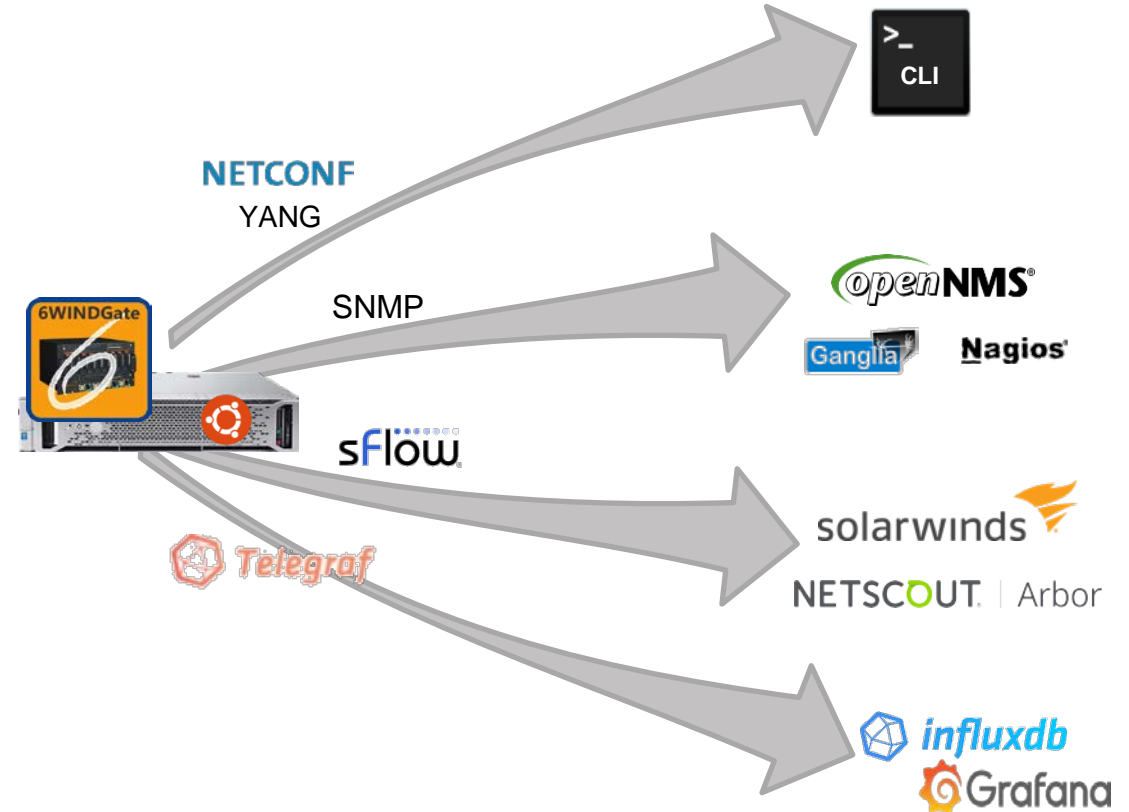


6WINDGate YANG / Configuration Extensibility

- **Customers can extend 6WINDGate management**
 - Extend the YANG model for an existing 6WINDGate feature
 - Define a new YANG model for a customer feature to be integrated with 6WINDGate
- **Customer's development teams will benefit from a standard, well designed management to quickly develop and test new management features**
 - CLI automatically available with the YANG model
 - Automatically generated documentation (command reference)
 - Network service written in Python (Existing templates and examples available with 6WINDGate features)
 - Custom datastore client can be developed using the GPB API
- **Examples**
 - Add a new CLI command for routing configuration or routing information display
 - Develop a 6WINDGate management extension for a customer GTP module integrated with 6WINDGate

Monitoring / Analytics for 6WINDGate Features

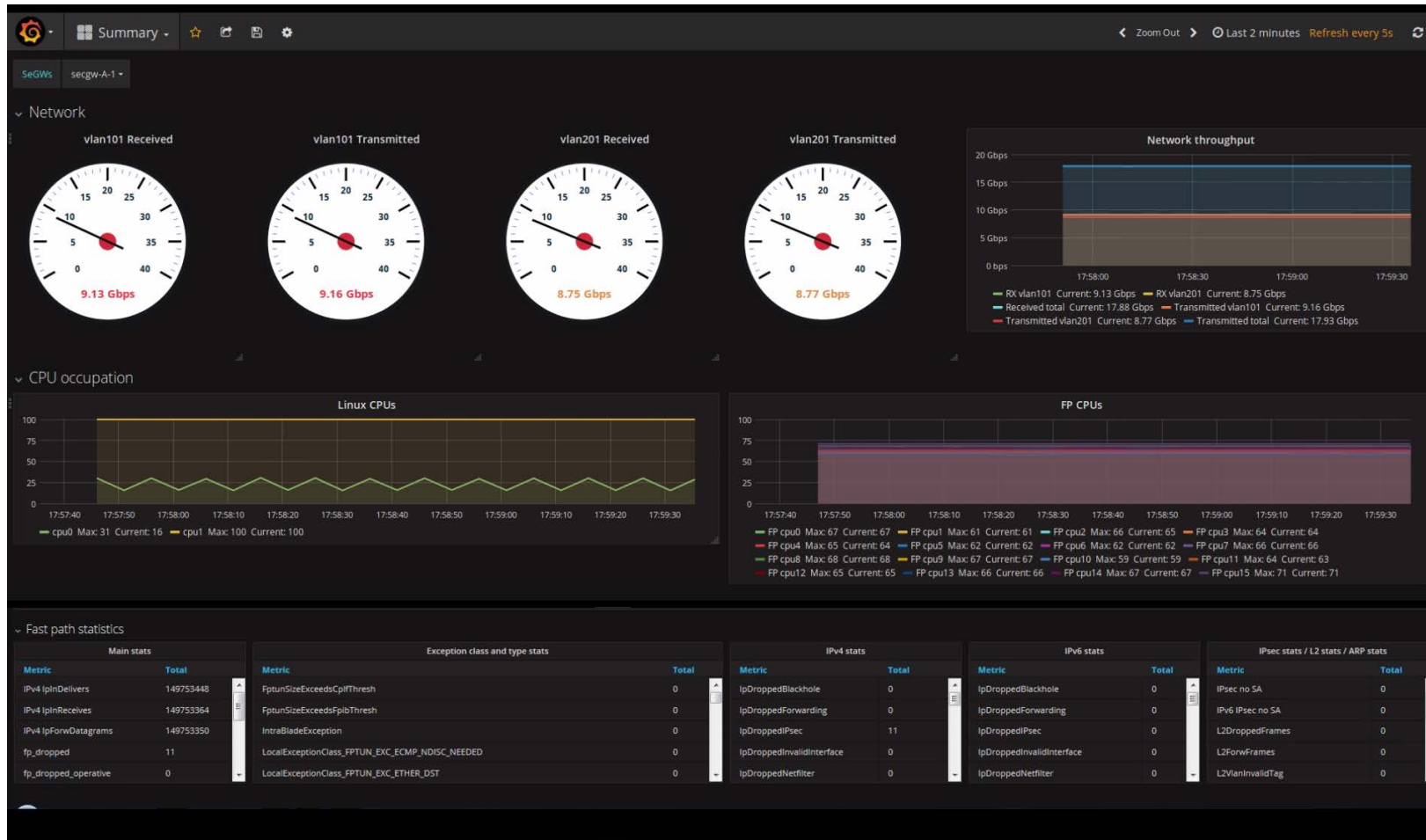
- **Granular statistics polling**
 - CLI or custom NETCONF client
 - Legacy SNMP
- **sFlow**
 - Data Plane packet sampling for integration with third-party collectors
- **KPIs**
 - KPIs are exported to TSDB (Telegraf / InfluxDB)
 - Analysis with graphical frontend (Grafana)
 - Customizable dashboards on [github](https://github.com)



6WINDGate Monitoring / Analytics Extensibility

- **Granular monitoring**
 - Same benefits as for configuration extension
- **Customers can customize 6WINDGate Analytics**
 - Add or extend KPI / Telegraf
 - Customize Grafana dashboards
- **Customers can integrate 6WINDGate with other tools**
 - Replace Telegraf
 - Integrate Telegraf with another TSDB or InfluxDB with another analytics frontend

Monitoring Using Grafana



Network throughput

CPU utilization

Data Plane statistics

6WINDGate Management Modules

- **6WINDGate can be managed by Linux thanks to the Linux / Fast Path Synchronization module**
- **6WINDGate Management modules provide integrated management including CLI and programmatic APIs instead of Linux shell and inconsistent configuration files**
- **Management Baseline provides Fast Path management**
 - NETCONF, SNMP
 - YANG-based datastore (sysrepo)
- **Control Plane management through add-ons**
 - Routing, Security, VRRP
- **Additional user interface modules**
 - CLI
 - Analytics / KPIs
 - Analytics / sFlow

Thank You
6WIND.com



#SPEEDMATTERS For Serious Networks